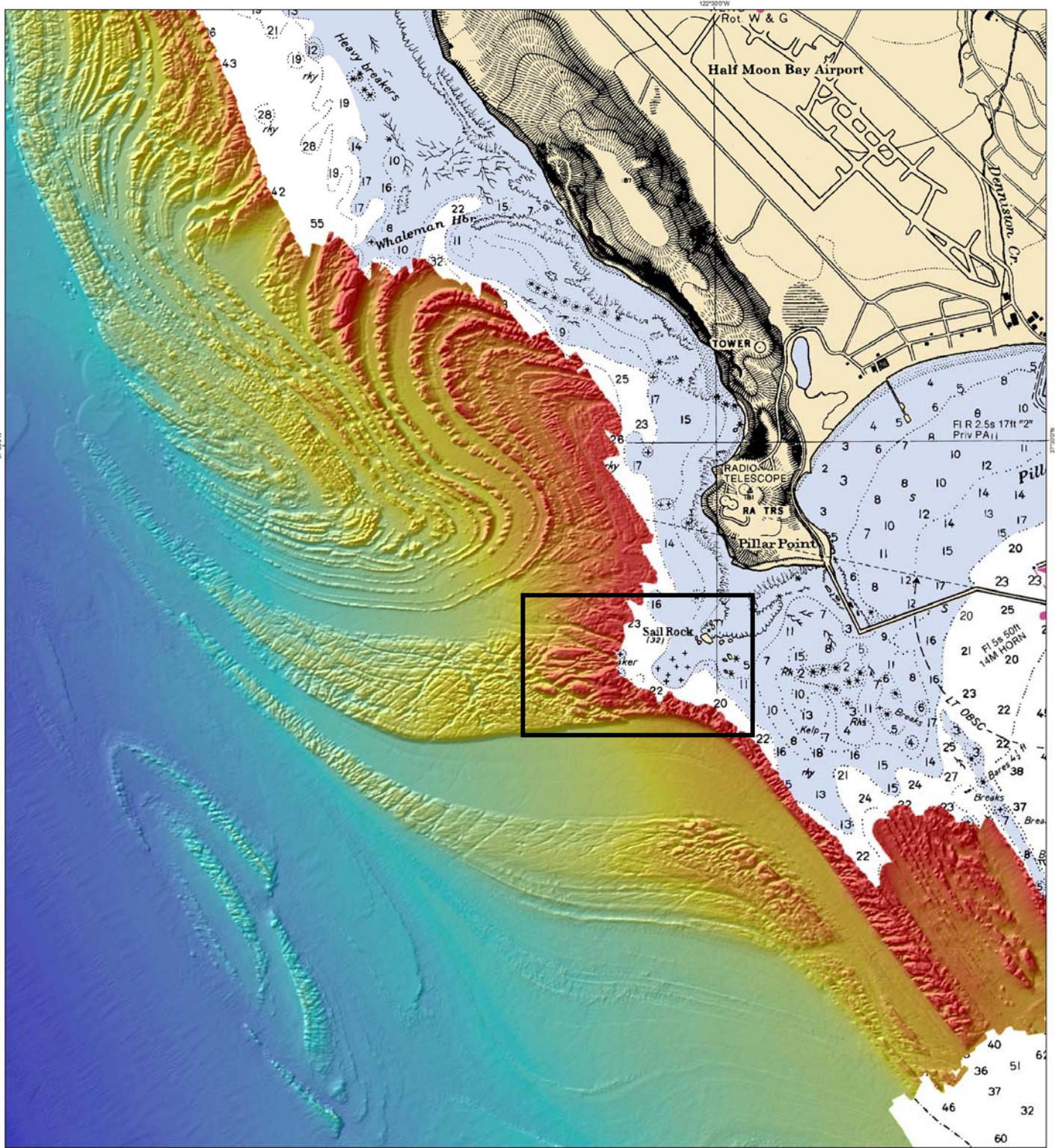


Mavericks - Half Moon Bay, California



0 500 1,000



Meters



Multibeam bathymetry data (2m resolution) shown in shaded relief and colored by depth. Background NOAA Chart 18682 (soundings in feet). Surveys conducted by Fugro Pelagos International (November 2006) and CSUMB Seafloor Mapping Lab (January 2007) as part of the North Central Coast Mapping Project. Sponsors: California Coastal Conservancy, Ocean Protection Council.

